



2017 catalog

For CO₂ and fiber laser consumables

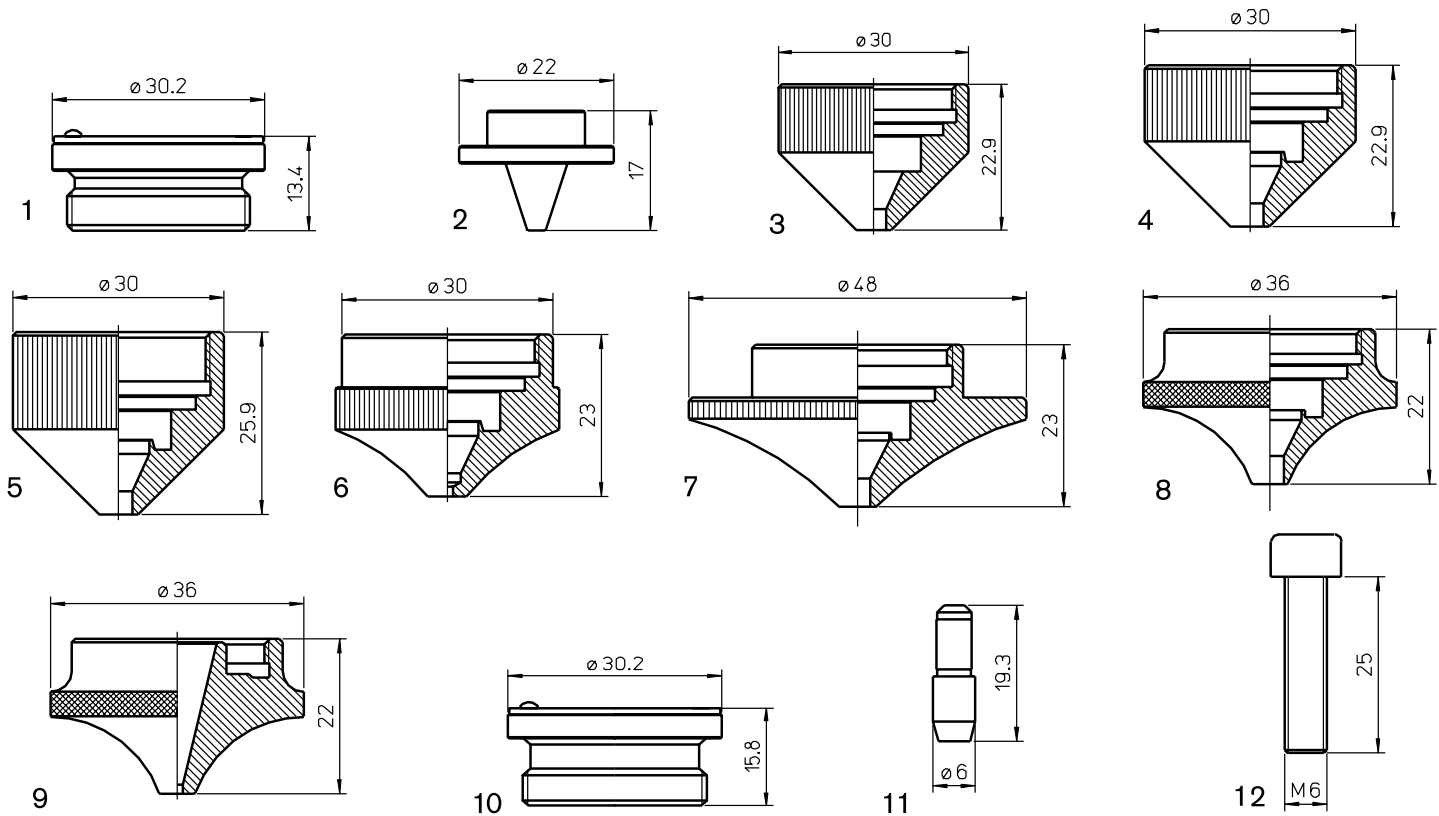
Replacements parts suitable for Mitsubishi®



Our value proposition

- Product breadth – with over 2,800 part numbers
- OEM quality/consistency for nozzles, ceramics and optics
- Technical/application support from OEM-trained technicians
- 100% satisfaction guarantee




Consumables

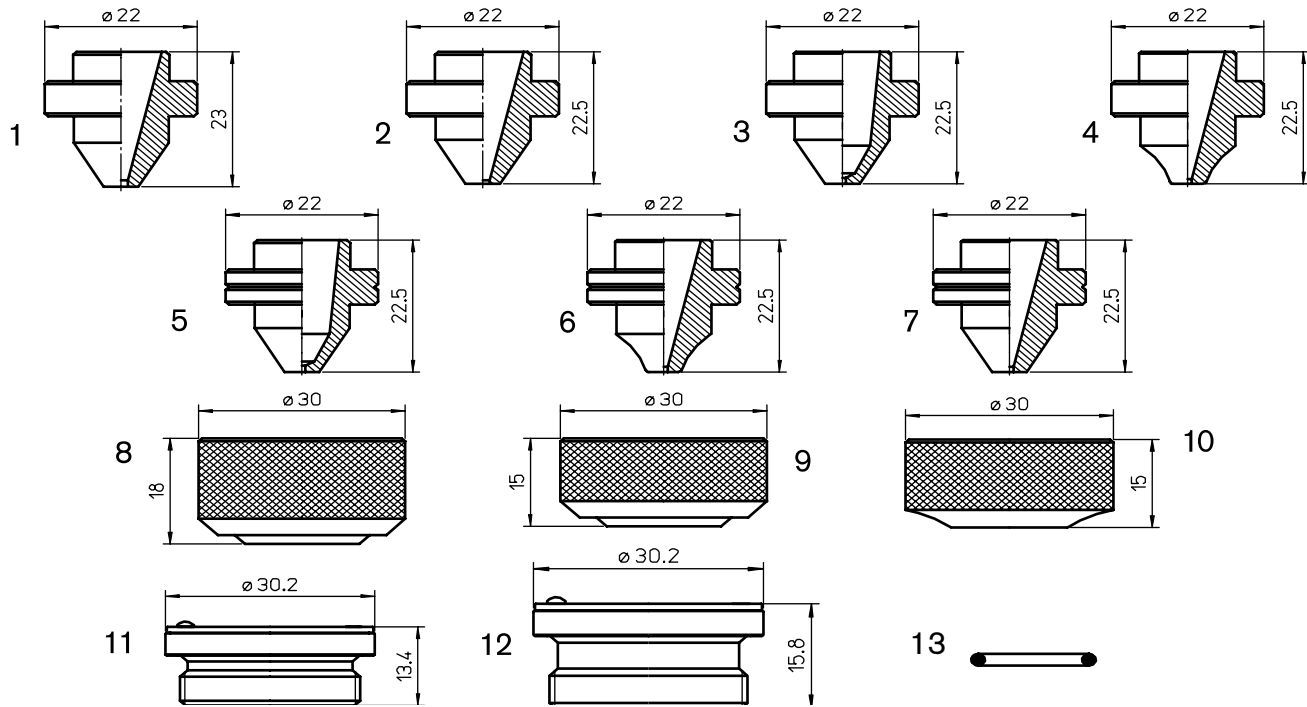
	Centricut part number	Reference number	Alternate reference	Description	Pkg qty	
1	MB334-0001	P0594-860-00001	AL267	Nozzle holder - IT HP2 MZP/MEL	1	
2	MB316-1121 NEW	W390	L1121	Inner nozzle - 1.5 mm - 3 holes	1	
	MB316-1122 NEW		L1122	Inner nozzle - 2.0 mm - 3 holes	1	
	MB316-390		L288	Double nozzle insert - 4 holes	1	
	MB316-1127 NEW		L1127	Inner nozzle - 1.5 mm - 4 holes	1	
	MB316-1116 NEW		L1116	Inner nozzle - 2.0 mm - 4 holes	1	
	MB316-2706		W270-6	L835	Double nozzle insert - 6 holes	1
	MB316-1117 NEW		L1117	Inner nozzle - 1.5 mm - 6 holes	1	
	MB316-1118 NEW		L1118	Inner nozzle - 2.0 mm - 6 holes	1	
	MB316-270		W270	L280	Double nozzle insert - 8 holes	1
	MB316-387		W387	L289	Double nozzle insert - 12 holes	1
	MB316-388		W388	L290	Double nozzle insert - 16 holes	1
	MB316-389		W389	L836	Double nozzle insert - 20 holes	1
MB316-515	W515	L291	Double nozzle insert - 24 Holes	1		
3	MB316-268 NEW		AL239	Shield cap - short w/o step		
	MB316-268CP NEW		AL239X	Shield cap - short CP w/o step		
4	MB316-0508 NEW		AL508	Outer nozzle - 1.2 mm	1	
	MB316-0510 NEW		AL510	Outer nozzle - 1.5 mm	1	
	MB316-0509 NEW		AL509	Outer nozzle - 1.7 mm	1	
	MB316-0511 NEW		AL511	Outer nozzle - 2.0 mm	1	
	MB316-0515 NEW		AL515	Outer nozzle - 2.3 mm	1	
	MB316-0512 NEW		AL512	Outer nozzle - 2.5 mm	1	
	MB316-0513 NEW		AL513	Outer nozzle - 3.0 mm	1	
	MB316-0514 NEW		AL514	Outer nozzle - 3.5 mm	1	

Centricut is not affiliated with the named manufacturers. Reference to machines, parts, descriptions, and model numbers are for convenience in verifying compatibility only. All parts are made by or for Centricut and are not made by the referenced manufacturers (unless expressly indicated). Centricut is a registered trademark of Hypertherm, Inc. All other trademarks are the properties of their respective owners.

Consumables

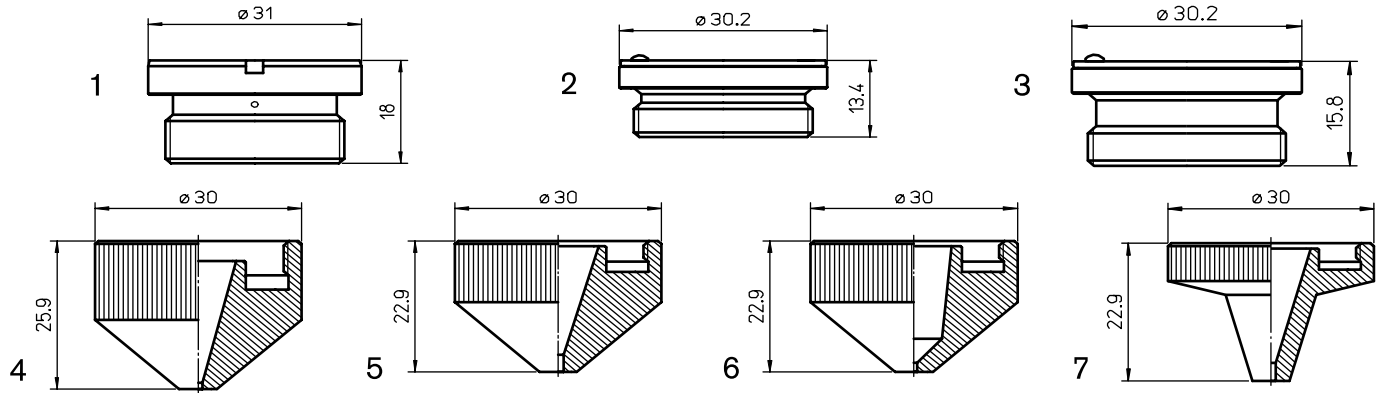
	Centricut part number	Reference number	Alternate reference	Description	Pkg qty
5	MB316-269	W269	AL65	Shield cap	1
	MB316-269CP		AL65X	Shield cap CP	1
6	AM416-0002		AL302	Nozzle - 1.7 mm (outer)	1
	AM416-0003		AL303	Nozzle - 2.0 mm (outer)	1
	AM416-0004		AL304	Nozzle - 2.5 mm (outer)	1
	AM416-0005		AL305	Nozzle - 3.0 mm (outer)	1
	AM416-0006		AL306	Nozzle - 4.0 mm (outer)	1
7	MB316-0440	BQ933D04YH01	AL266	Nozzle, outer - high speed pierce	1
8	AM416-2197	71802197, BQ933D044H01	AL270	Nozzle, outer	1
9	AM416-5400	7180015400, BQ023D020H01	L1262	Nozzle - 1.7 mm high speed pierce	1
10	PT347-0895 Recommended	P0593-895-00001	AL401	Nozzle holder - IT HP2" ZP/MEL	1
	PT347-0895OEM			Nozzle holder - IT HP2" ZP/MEL (OEM)	1
11	AM416-0009	71800009, P921K000P25, JPZA5-6	AL345	Safety pin	1
12	AM416-A005	71800008, L2490A005	AL346	Safety screw	1

*PolyTetraFluoroEthylene is a fluorocarbon-based polymer and is commonly abbreviated PTFE. The Teflon® brand of PTFE is manufactured only by DuPont and is not sold by Hypertherm. Hypertherm purchases other brands of PTFE from various high quality manufacturers.



Consumables

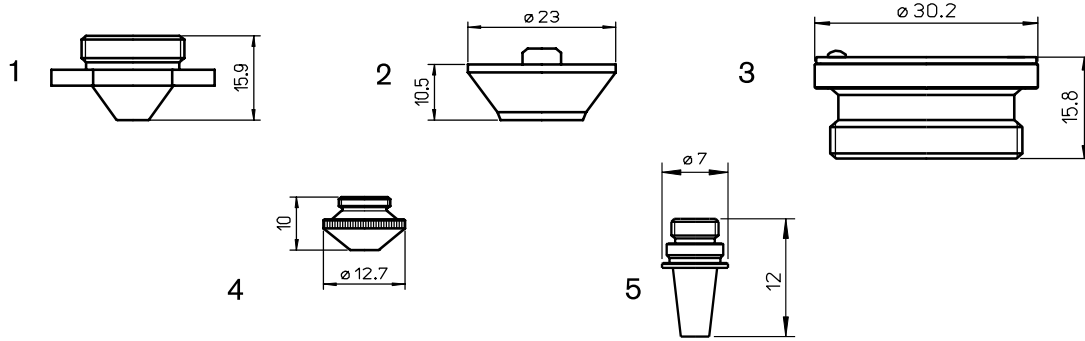
	Centricut part number	Reference number	Alternate reference	Description	Pkg qty
1	MB327-327-1		L354	Nozzle - 1.0 mm	1
	MB327-777	W777	L363	Nozzle - 1.2 mm	1
	MB327-266	W266	L355	Nozzle - 1.5 mm	1
	MB327-267	W267	L356	Nozzle - 2.0 mm	1
	MB327-776	W776	L357	Nozzle - 2.5 mm	1
	MB327-268	W268	L358	Nozzle - 3.0 mm	1
	MB327-268-3.5	W268-3.5	L359	Nozzle - 3.5 mm	1
2	AM326-0018	71800018, BQ943D157H01	L1134	Nozzle - 1.5 mm	1
	AM326-0019	71800019, BQ943D157H02	L1135	Nozzle - 2.0 mm	1
	AM326-0020	71800020, BQ943D157H03	L1136	Nozzle - 2.5 mm	1
	AM326-0021	71800021, BQ943D157H04	L1137	Nozzle - 3.0 mm	1
	AM326-0022	71800022, BQ943D596H01	L1138	Nozzle - 3.5 mm	1
3	AM387-0016	71800016, BQ943D897H01, W18Q94389701	L1125	Nozzle - 1.0 mm	1
	AM387-1901	W18Q93309101	L1128	Nozzle - 2.5 mm	1
	AM387-1902	W18Q93309102	L1129	Nozzle - 3.0 mm	1
4	AM387-0001	71800016A0, BQ933D283H01	L1126	Nozzle - 1.0 mm w/radius no grooves	1
5	MB327-0010		L965	Nozzle - 1.0 mm	1
	MB327-0012		L966	Nozzle - 1.2 mm	1
	MB327-0015		L967	Nozzle - 1.5 mm	1
	MB327-0017		L964	Nozzle - 1.7 mm	1
	MB327-0020		L968	Nozzle - 2.0 mm	1
	MB327-0025		L969	Nozzle - 2.5 mm	1
6	AM387-0017	71800017, BQ943D269H01, W18Q93326901	L1130	Nozzle - 1.2 mm w/radius	1
7	AM387-2701	W18Q93302701	L1132	Nozzle - 1.7 mm	1
8	MB327-263	W263	AL116	Nozzle nut	1
9	MB327-263S		AL240	Nozzle nut short	1
10	AM367-0269	71800026, BQ933D94H01	AL269	Nozzle nut short	1
11	MB334-0001	P0594-860-00001	AL267	Nozzle holder - IT HP2" MZP/MEL	1
12	PT347-0895	Recommended P0593-895-00001	AL401	Nozzle holder - IT HP2" ZP/MEL	1
	PT347-0895OEM			Nozzle holder - IT HP2" ZP/MEL (OEM)	1
13	MB334-W290	W290	AL388	O-ring	1



Consumables

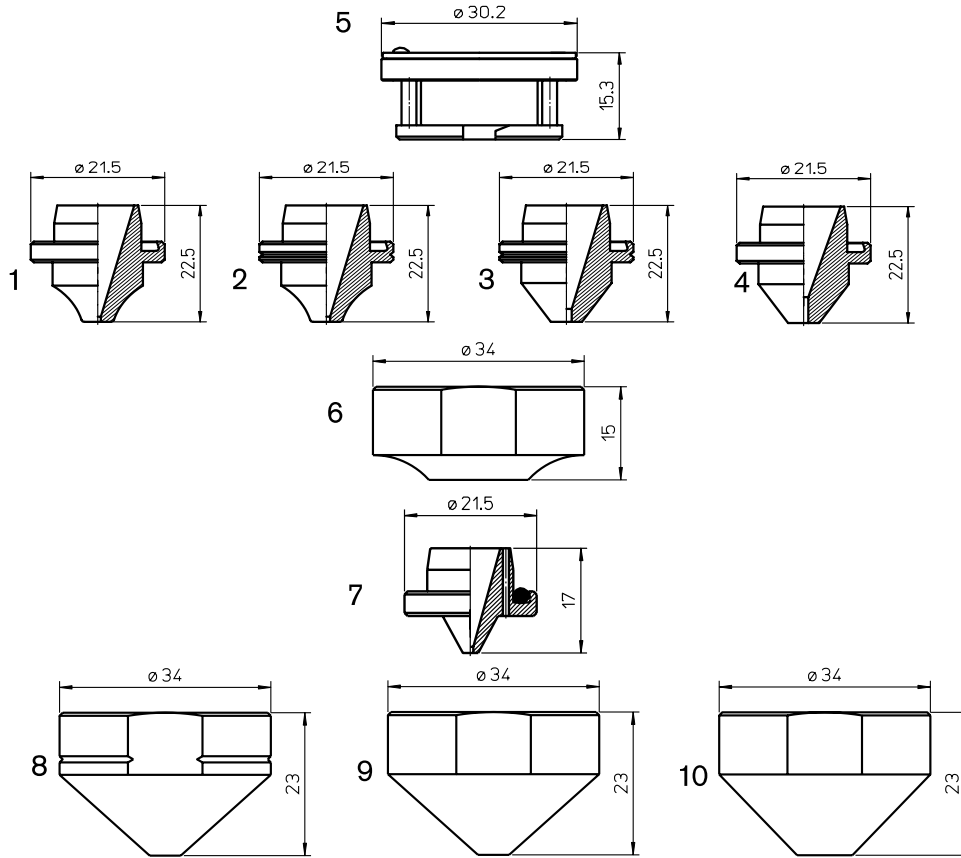
	Centricut part number	Reference number	Alternate reference	Description	Pkg qty
1	MB334-0830	P0461-230-00001, W830	AL373	Nozzle holder - IT461	1
2	MB334-0001	P0594-860-00001	AL267	Nozzle holder - IT HP2 MZP/MEL	1
3	PT347-0895 PT347-0895OEM	P0593-895-00001	AL401	Nozzle holder - IT HP2" ZP/MEL Nozzle holder - IT HP2" ZP/MEL (OEM)	1 1
4	MB334-1249	W1249	L398	Nozzle - 1.0 mm	1
	MB334-1256	W1256	L397	Nozzle - 1.2 mm	1
	MB334-1250	W1250	L399	Nozzle - 1.5 mm	1
	MB334-1251	W1251	L702	Nozzle - 2.0 mm	1
	MB334-1252	W1252	L703	Nozzle - 2.5 mm	1
	MB334-1253	W1253	L704	Nozzle - 3.0 mm	1
	MB334-1254	W1254	L705	Nozzle - 3.5 mm	1
	MB334-1255	W1255	L706	Nozzle - 4.0 mm	1
5	MB334-1626	W1626	L910	Nozzle - 1.0 mm	1
	MB334-1627	W1627	L911	Nozzle - 1.2 mm	1
	MB334-1625	NEW	L908	Nozzle - 1.4 mm	1
	MB334-1628	W1628	L912	Nozzle - 1.5 mm	1
	MB334-1661	W1661	L918	Nozzle - 1.7 mm	1
	MB334-1629	W1629	L913	Nozzle - 2.0 mm	1
	MB334-1630	W1630	L914	Nozzle - 2.5 mm	1
	MB334-1664	W1664	L915	Nozzle - 3.0 mm	1
	MB334-1665	W1665	L916	Nozzle - 3.5 mm	1
	MB334-1666	W1666	L917	Nozzle - 4.0 mm	1
	MB334-1662	W1662	L909	Nozzle - 4.5 mm	1
	MB334-1663	W1663	L919	Nozzle - 5.0 mm	1
	MB334-1626CP	W1626	L910X	Nozzle - 1.0 mm CP	1
	MB334-1627CP	W1627	L911X	Nozzle - 1.2 mm CP	1
	MB334-1628CP	W1628	L912X	Nozzle - 1.5 mm CP	1
	MB334-1661CP	W1661	L918X	Nozzle - 1.7 mm CP	1
	MB334-1629CP	W1629	L913X	Nozzle - 2.0 mm CP	1
	MB334-1630CP	W1630	L914X	Nozzle - 2.5 mm CP	1
	MB334-1664CP	W1664	L915X	Nozzle - 3.0 mm CP	1
	MB334-1665CP	W1665	L916X	Nozzle - 3.5 mm CP	1
MB334-1666CP	W1666	L917X	Nozzle - 4.0 mm CP	1	
6	MB334-1626B	W1626B	L1078	Nozzle - 1.0 mm low pressure	1
	MB334-1627B	W1627B	L1079	Nozzle - 1.2 mm low pressure	1
	MB334-1628B	W1628B	L1080	Nozzle - 1.5 mm low pressure	1
	MB334-1629B	W1629B	L1081	Nozzle - 2.0 mm low pressure	1
	MB334-1630B	W1630B	L1082	Nozzle - 2.5 mm low pressure	1
	MB334-1664B	W1664B	L1083	Nozzle - 3.0 mm low pressure	1
	MB334-1665B	W1665B	L1084	Nozzle - 3.5 mm low pressure	1
	MB334-1666B	W1666B	L1085	Nozzle - 4.0 mm low pressure	1
7	MB334-1631	NCW1626C	L1715	Nozzle - 1.0 mm narrow cone	1
	MB334-1632	NCW1627C	L1716	Nozzle - 1.2 mm narrow cone	1
	MB334-1633	NCW1629C	L1718	Nozzle - 2.0 mm narrow cone	1
	MB334-1634	NCW1630C	L1719	Nozzle - 2.5 mm narrow cone	1

Centricut is not affiliated with the named manufacturers. Reference to machines, parts, descriptions, and model numbers are for convenience in verifying compatibility only. All parts are made by or for Centricut and are not made by the referenced manufacturers (unless expressly indicated). Centricut is a registered trademark of Hypertherm, Inc. All other trademarks are the properties of their respective owners.


Consumables

	Centricut part number	Reference number	Alternate reference	Description	Pkg qty
1	MB330-000		L548	Nozzle - 1.0 mm	1
	MB330-001	W001	L549	Nozzle - 1.5 mm	1
	MB330-002	W002	L550	Nozzle - 2.0 mm	1
	MB330-004	W004	L551	Nozzle - 2.5 mm	1
	MB330-003	W003	L552	Nozzle - 3.0 mm	1
2	PT344-1079	281079, P0492-430-00003, W149	AL138	OEM nozzle holder - KTM1.5" S F2.5"	1
3	PT347-0895	Recommended P0593-895-00001	AL401	Nozzle holder - IT HP2" ZP/MEL	1
	PT347-0895OEM			Nozzle holder - IT HP2" ZP/MEL (OEM)	1
4	PT344-0013	280013, P0492-441-00008, W222	L400	Nozzle - 0.8 mm	1
	PT344-0013X	280013, P0492-441-00008, W222	L30400	Nozzle - 0.8 mm (10 pack)	10
	PT344-0014	280014, P0492-442-00010, W223	L401	Nozzle - 1.0 mm	1
	PT344-0014X	280014, P0492-442-00010, W223	L30401	Nozzle - 1.0 mm (10 pack)	10
	PT344-0015	280015, P0492-443-00012	L402	Nozzle - 1.2 mm	10
	PT344-0015X	280015, P0492-443-00012	L30402	Nozzle - 1.2 mm (10 pack)	1
	PT344-0016	280016, P0492-444-00015, W224	L403	Nozzle - 1.5 mm	1
	PT344-0016X	280016, P0492-444-00015, W224	L30403X	Nozzle - 1.5 mm (10 pack)	10
	PT344-0018	P0492-447-00018	L543	Nozzle - 1.8 mm	10
	PT344-0018X	P0492-447-00018	L30543	Nozzle - 1.8 mm (10 pack)	1
	PT344-0937	280937, P0492-445-00020, W225	L544	Nozzle - 2.0 mm	1
	PT344-0937X	280937, P0492-445-00020, W225	L30544	Nozzle - 2.0 mm (10 pack)	10
	PT344-0023	P0492-448-00023	L546	Nozzle - 2.3 mm	1
	PT344-0023X	P0492-448-00023	L30546	Nozzle - 2.3 mm (10 pack)	10
	PT344-1791	281791, P0492-44500020, W226	I545	Nozzle - 2.5 mm	1
	PT344-1791X	281791, P0492-44500020, W226	L30545	Nozzle - 2.5 mm (10 pack)	10
	PT344-0027		L547	Nozzle - 3.0 mm	1
	PT344-0027X		L30547	Nozzle - 3.0 mm (10 pack)	10
	PT344-0008CP	280013, P0492-441-00008, W222	L400X	Nozzle - 0.8 mm	1
	PT344-0008CPX	280013, P0492-441-00008, W222	L30400X	Nozzle - 0.8 mm (10 pack)	10
	PT344-0010CP	280014, P0492-442-00010, W223	L401X	Nozzle - 1.0 mm	1
	PT344-0010CPX	280014, P0492-442-00010, W223	L30401X	Nozzle - 1.0 mm (10 pack)	10
	PT344-0012CP	280015, P0492-443-00012	L402X	Nozzle - 1.2 mm	1
	PT344-0012CPX	280015, P0492-443-00012	L30402X	Nozzle - 1.2 mm (10 pack)	10
	PT344-0015CP	280016, P0492-444-00015, W224	L403X	Nozzle - 1.5 mm	1
	PT344-0015CPX	280016, P0492-444-00015, W224	L30403X	Nozzle - 1.5 mm (10 pack)	10
	PT344-0018CP	P0492-447-00018	L543X	Nozzle - 1.8 mm	1
	PT344-0018CPX	P0492-447-00018	L30543X	Nozzle - 1.8 mm (10 pack)	10
	PT344-0022CP	280937, P0492-445-00020, W225	L544X	Nozzle - 2.0 mm	1
	PT344-0022CPX	280937, P0492-445-00020, W225	L30544X	Nozzle - 2.0 mm (10 pack)	10
	PT344-0023CP	P0492-448-00023	L546X	Nozzle - 2.3 mm	1
	PT344-0023CPX	P0492-448-00023	L30546X	Nozzle - 2.3 mm (10 pack)	10
	PT344-0025CP	281791, P0492-446-00025, W226	L545X	Nozzle - 2.5 mm	1
	PT344-0025CPX	281791, P0492-446-00025, W226	L30545X	Nozzle - 2.5 mm (10 pack)	10
	PT344-0027CP		L547X	Nozzle - 3.0 mm	1
	PT344-0027CPX		L30547X	Nozzle - 3.0 mm (10 pack)	10
5	MB336-0018	BKO-NB8358H03, BQ949D117,P0352-377-00018	L1710	Nozzle - 1.8 mm	1

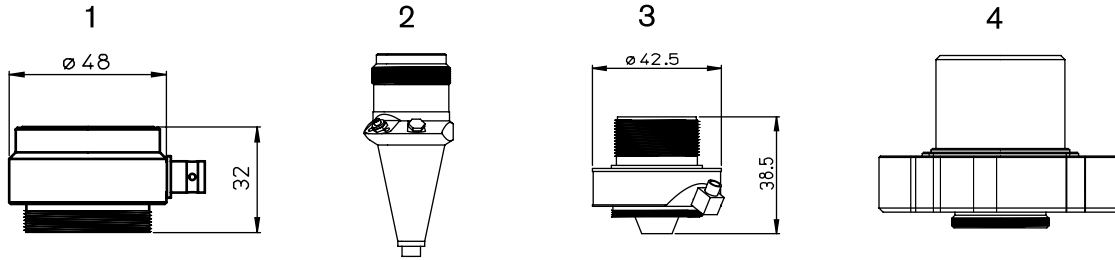
Centricut is not affiliated with the named manufacturers. Reference to machines, parts, descriptions, and model numbers are for convenience in verifying compatibility only. All parts are made by or for Centricut and are not made by the referenced manufacturers (unless expressly indicated). Centricut is a registered trademark of Hypertherm, Inc. All other trademarks are the properties of their respective owners.



Consumables

	Centricut part number	Reference number	Alternate reference	Description	Pkg qty
1	MB327-1620	BQ983D150-H01	L1620	Nozzle - 1.0 mm	1
	MB327-1633	BQ983D314-H01	L1633	Nozzle - 1.4 mm	1
2	MB327-1621	BQ983D151-H01	L1621	Nozzle - 1.2 mm	1
3	MB327-1622	BQ983D152-H01	L1622	Nozzle - 1.7 mm	1
4	MB327-1623	BQ983D153-H01	L1623	Nozzle - 1.5 mm	1
	MB327-1624	BQ963D153-H02	L1624	Nozzle - 2.0 mm	1
	MB327-1625	BQ983D314-H03	L1625	Nozzle - 2.5 mm	1
	MB327-1626	BQ983D151-H04	L1626	Nozzle - 3.0 mm	1
	MB327-1627	BQ983D152-H05	L1627	Nozzle - 3.5 mm	1
5	MB327-0311		AL460	EX Insulation nozzle holder	1
6	MB327-0328	BQ980D328G01, LT10700	AL467	Outer nozzle	1
7	MB327-1749	NEW	L1749	Nozzle - double 1.5 mm 3 holes w/o-ring	1
	MB327-1751	NEW	L1751	Nozzle - double 1.5 mm 4 holes w/o-ring	1
	MB327-1753	NEW	L1753	Nozzle - double 1.5 mm 6 holes w/o-ring	1
	MB327-1755	NEW	BQ983D206H03 L1755	Nozzle - double 8 holes w/o-ring	1
	MB327-1757	NEW	BQ983D206H04 L1757	Nozzle - double 24 holes w/o-ring	1
	MB327-1750	NEW	L1750	Nozzle - double 2.0 mm 3 holes w/o-ring	1
	MB327-1752	NEW	L1752	Nozzle - double 2.0 mm 4 holes w/o-ring	1
	MB327-1754	NEW	L1754	Nozzle - double 2.0 mm 6 holes w/o-ring	1
8	MB327-0472	NEW	AL472	Outer nozzle - 1.5 mm	1
	MB327-0473	NEW	AL473	Outer nozzle - 2.0 mm	1
	MB327-0474	NEW	AL474	Outer nozzle - 2.5 mm	1
	MB327-0475	NEW	AL475	Outer nozzle - 3.0 mm	1
	MB327-0476	NEW	AL476	Outer nozzle - 3.5 mm	1
	MB327-0434		BQ980D434G01 AL468	Outer nozzle - 4.0 mm (thick)	1
9	MB327-4423	BQ980D442G03	AL469	Outer nozzle - 4.0 mm	1
10	MB327-4421	BQ980D442G01	AL470	Outer nozzle - 7.0 mm	1
	MB327-393 (not shown)		AL393	Nozzle o-ring	1

Centricut is not affiliated with the named manufacturers. Reference to machines, parts, descriptions, and model numbers are for convenience in verifying compatibility only. All parts are made by or for Centricut and are not made by the referenced manufacturers (unless expressly indicated). Centricut is a registered trademark of Hypertherm, Inc. All other trademarks are the properties of their respective owners.


Sensor cones

	Centricut part number	Reference number	Alternate reference	Description	Pkg qty
Sensor cone repair					
1	MB999-429A	W429A	461	Sensor repair W429A	1
2	PT999-HNZ	56743300500		Sensor repair HNZ	1
3	PT999-25ZJ	P0361-203-00001		Sensor repair 25ZJ	1
	MB999-239	W239		Sensor repair W239	1
4	MB999-SE	LP48300		Sensor repair SE	1
New sensor cones					
2	PT347-0011	P0354-110-00002		Sensor cone HNZ	1

Sensor repairs available in select regions only.

Optics

Centricut part number	Reference number	Type	Diameter	Focal length	Edge thickness
Lenses					
MB312-018	W018	PLX	1.5"	7.5"	.310"
MB312-500	W500	PLX	1.5"	5.0"	.310"
MB312-505	W505	PLX	2.0"	5.0"	.310"
MB312-510	W510	PLX	2.0"	7.5"	.310"
MB312-8858	NEW 6418858	PLX	2.0"	7.5"	.45"
Ultra low absorption lenses					
MB312-018MP5	W018	PLX	1.5"	7.5"	.300"
MB312-505MP5	W505	PLX	2.0"	5.0"	.310"
MB312-510MP5	W510	PLX	2.0"	7.5"	.310"

Centricut part number	Reference number	Type	Diameter	Edge thickness
Windows				
MB312-2336		FS	25.40 mm	4.00 mm

Optics care

Centricut part number	Reference number	Description	Pkg qty
TR300-6452	N/A	Lens cleaning paper, Tiffen – 50 piece	1
AM313-SC50	SC50	Lens cleaning paper, Tresor – 50 piece	1
TR300-1115		Lens cleaning pre-cut cotton – 80 piece	1
TR300-SC20		Cotton swab – 20 piece	1
TR300-1010	AL1010	Dropper, lens cleaning fluid	1
TR300-1112		Optical cleaning fluid	1
TR300-0699	70675699 REVA	Lens Cleaning Swabs (25 pack)	1
TR300-7991	027991	Polyester Wipes 4" x 4"	1
TR301-0282		Injector	1
TR300-LSA		Lens stress analyzer	1
TR300-255	AL255	Loupe, magnifying	1
TR300-271	AL271	Base, lens maintenance	1
TR300-7388	787388	Mirror polish (250 ml)	1

Centricut is not affiliated with the named manufacturers. Reference to machines, parts, descriptions, and model numbers are for convenience in verifying compatibility only. All parts are made by or for Centricut and are not made by the referenced manufacturers (unless expressly indicated). Centricut is a registered trademark of Hypertherm, Inc. All other trademarks are the properties of their respective owners.

Technical support

- Our technical service team can answer questions about any laser or plasma cutting system. Whether it's a question about a part, a system, or for guidance on how to optimize performance, our experts can help.
- We stand behind our products with industry-leading technical expertise
- OEM trained technicians on staff with over 25 years experience



**HELPING YOU
SHAPE THE WORLD.**



PLASMA | LASER | WATERJET | AUTOMATION | SOFTWARE | CONSUMABLES

For more information on Centricut laser products, visit
www.hypertherm.com/centricut/laser

Hypertherm, Centricut, SilverLine and CoolFlow are trademarks of Hypertherm Inc., and may be registered in the United States and/or other countries. All other trademarks are the property of their respective owners.

One of Hypertherm's long-standing core values is a focus on minimizing our impact on the environment. Doing so is critical to our, and our customers' success. We are always striving to become better environmental stewards; it is a process we care deeply about.

© 12/2016 Hypertherm Inc.



Hypertherm[®]
SHAPING POSSIBILITY™

